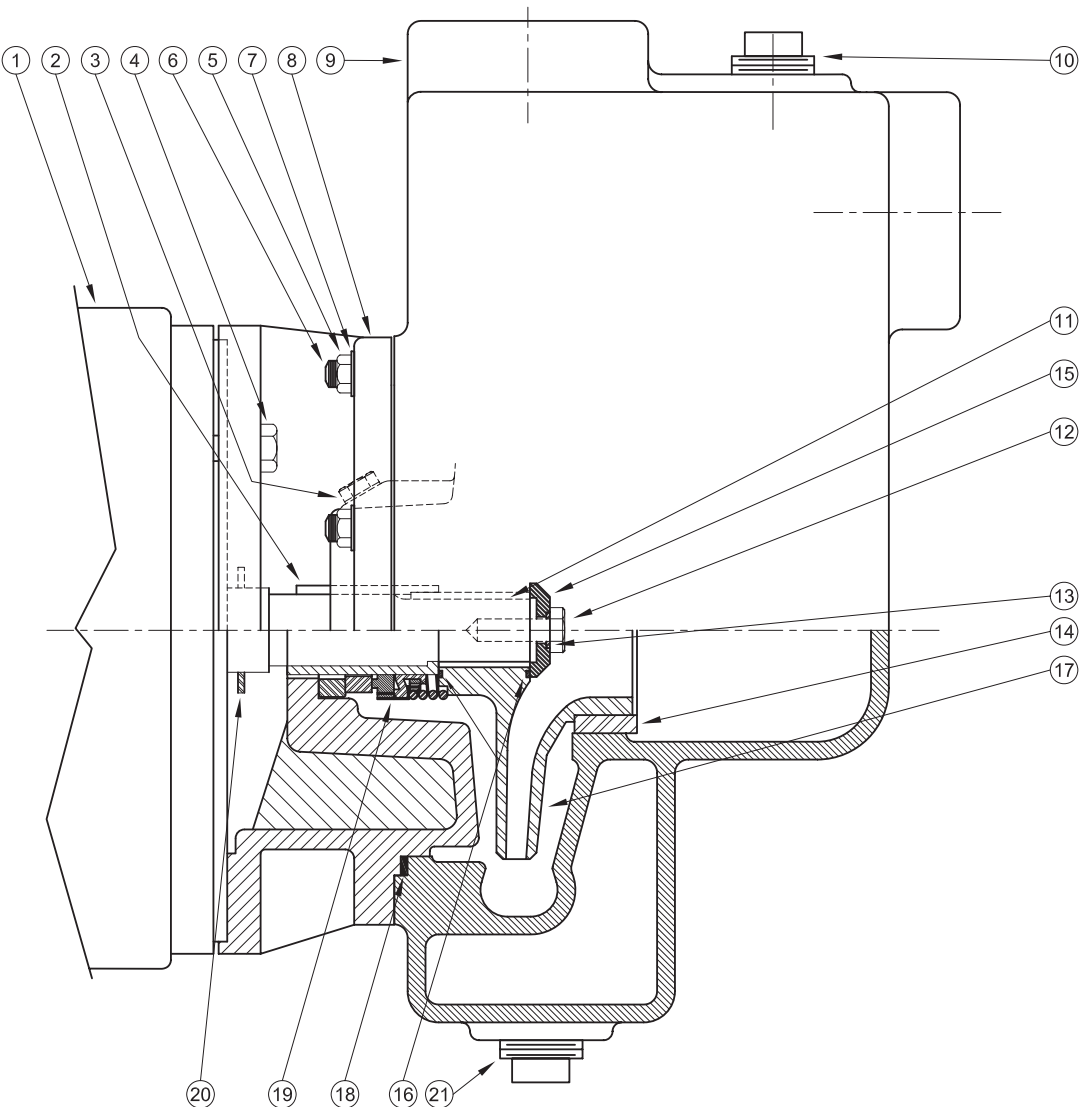


Series: WG6-2

Centrifugals - Self-Priming

BURKS®
www.cranepumps.com



| 1 - MOTORS | | | |
|-----------------------------------|-------------------------|---------------|-------------------------|
| RPM & PHASE | PART NUMBER | HP | FRAME SIZE |
| OPEN DRIP PROOF | | | |
| 3500 RPM Single Phase (ODP) | 09902 21850 | 5 7½ | 184JM 213JM |
| 3500 RPM Three Phase (ODP) | 09906 09907 09999 | 5 7½ 10 | 182JM 184JM 213JM |
| TOTALLY ENCLOSED | | | |
| 3500 RPM Three Phase (TEFC) | 09950 09951 20000 | 5 7½ 10 | 184JM 213JM 215JM |
| EXPLOSION PROOF | | | |
| 3500 RPM Three Phase (XP) | 09954 09955 20001 | 5 7½ 10 | 184JM 213JM 215JM |

SECTION C5PP
PAGE 60
DATE 1/09

CRANE®

A Crane Co. Company

PUMPS & SYSTEMS

USA: (937) 778-8947 • Canada: (905) 457-6223 • International: (937) 615-3598

| SYMBOL NUMBER | PART NUMBER | QTY | DESCRIPTION |
|--|--------------|-----|--|
| DIFFERING PARTS FOR ALL BRONZE CONSTRUCTION | | | |
| 8 | 09912-B | 1 | Adapter - Bronze, 182-184JM Frames |
| | 09920-B | 1 | Adapter - Bronze, 213-215JM Frames |
| * 9 | 23123-A-1 | 1 | Casing Assy - BRONZE w/Bronze Wear Ring - 5 & 7½HP |
| | 23123-A | 1 | Casing - Bronze |
| 12 | 03289 | 1 | Cap Screw, 3/8-16 x 1" Lg - Bronze |
| DIFFERING PARTS FOR ALL IRON CONSTRUCTION | | | |
| 2 | 22063-A | 1 | Shaft Sleeve - SS |
| 3 | 04236-A | 1 | Plug, 1/4-18 NPT - SS |
| * 9 | 23123-B-1 | 1 | Casing Assy - Iron w/Steel Wear Ring - 5 & 7½HP |
| 10 | 26149 | 1 | Plug, 1-11½ NPT, Sq Hd - Iron |
| 14 | 23265-A | 1 | Wear Ring - Steel (23123-B-1 Casing Assy) |
| 15 | 22105-A | 1 | Washer - Steel, Impeller Retaining |
| ** 17 | 20420-A-6.06 | 1 | Impeller - Iron, 5HP |
| | 09928-A-6.25 | 1 | Impeller - Iron, 7½HP |
| | 09929-A-6.25 | 1 | Impeller - Iron, 10HP |

(*) Casing Assy includes Symbol 14.

23270-1, -A-1, -B-1 (5 & 7½HP) are complete casing assemblies consisting of symbols 6, 9, 10, 14 & 21.

23270, -A (10HP) are complete casing assemblies consisting of symbols 6, 9, 10 & 21.

(**) Size suffixes same as standard bronze impellers.

| SYMBOL NUMBER | PART NUMBER | QTY | DESCRIPTION |
|---------------|-------------|-----|---|
| 2 | 22063-C | 1 | Shaft Sleeve - Bronze |
| 3 | 04236 | 1 | Plug, 1/4-18 NPT - Bronze |
| 4 | 01928 | 4 | Cap Screw, 3/8-16 x 1" Lg (09912 Adapter) |
| | 1-68-6 | 4 | Cap Screw, 1/2-13 x 1¼" Lg (09920 Adapter) |
| 5 | 15-23-6 | 8 | Nut, 3/8-16 |
| 6 | 03075 | 8 | Stud, 3/8-16 x 1¼" Lg |
| 7 | 01609-A | 8 | Washer |
| 8 | 09912 | 1 | Adapter - Iron, 182-184JM Frames |
| | 09920 | 1 | Adapter - Iron, 213-215JM Frames |
| * 9 | 23123-1 | 1 | Casing Assy - Iron w/Bronze Wear Ring, 5 & 7½HP |
| | 23123 | 1 | Casing Assy - Iron, 10HP |
| 10 | 02954 | 1 | Plug 1-11½ NPT, Sq Hd - Bronze |
| 11 | 23014 | 1 | Key, 3/16 Sq x 1½" Lg |
| 12 | 01928-A | 1 | Cap Screw, 3/8-16 x 1" Lg - SS |
| 13 | 22080 | 1 | O-Ring - Buna-N (Std) |
| | 22081 | 1 | O-Ring - Viton |
| | 22082 | 1 | O-Ring - Teflon |
| | 22093 | 1 | O-Ring - EPDM |
| 14 | 23265 | 1 | Wear Ring - Bronze (23123-1 Casing Assy) |
| 15 | 22105-C | 1 | Washer - Bronze, Impeller Retaining |
| 16 | 22083 | 2 | O-Ring - Buna-N (Std) |
| | 22084 | 2 | O-Ring - Viton |
| | 22085 | 2 | O-Ring - Teflon |
| | 22094 | 2 | O-Ring - EPDM |
| 17 | 20420-6.06 | 1 | Impeller - Bronze, 5HP |
| | 09928-6.25 | 1 | Impeller - Bronze, 7½HP |
| | 09929-6.25 | 1 | Impeller - Bronze, 10HP |
| 18 | 22099 | 1 | O-Ring - Buna-N (Std) |
| | 23000 | 1 | O-Ring - Viton |
| | 23002 | 1 | O-Ring - Teflon |
| | 23001 | 1 | O-Ring - EPDM |
| 19 | 09917 | 1 | Mechanical Seal - Buna-N (Std) |
| | 09926 | 1 | Mecahnical Seal - Viton |
| | 21271 | 1 | Mechanical Seal - EPDM |
| 20 | 09918 | 1 | Slinger Washer |
| 21 | 00127 | 2 | Plug, Sq Hd - Iron |